



Front Elevation A



Front Elevation B

## House Type 22

Quality Housing for Sustainable Communities Standards

4 Bedroom / 7 Person House (2 Storey) Areas:

	Target Gross Floor Areas (m <sup>2</sup> )	Min-Main Living Room (m <sup>2</sup> )	Aggregate Living Area (m <sup>2</sup> )	Aggregate Bedroom Area (m <sup>2</sup> )	Storage (m <sup>2</sup> )
Required	110 sqm	15 sqm	40 sqm	43 sqm	6 sqm
Provided	117.1 sqm	16.9 sqm	40sqm	43.9 sqm	7.2 sqm

4 Bedroom / 7 Person (2 Storey) Widths:

	Single Bedroom (m)	Double Bedroom (m)	Living Rm [1 Bed] (m)	Living Rm [2 Bed] (m)	Living Rm [3 Bed] (m)
Required	2.1m	2.8m	3.3m	3.6m	3.8m
Provided	2.75 m	3 m	-	-	3.85 m

## House Type 24

Quality Housing for Sustainable Communities Standards

2 Bedroom / 3 Person (apt) Areas:

	Target Gross Floor Areas (m <sup>2</sup> )	Aggregate Living Area (m <sup>2</sup> )	Aggregate Bedroom Area (m <sup>2</sup> )	Storage (m <sup>2</sup> )
Required	63 sqm	28sqm	20.1 sqm	5 sqm
Provided	GF 67.5sqm FF 69.33sqm*	GF 28.5sqm FF 28.7sqm	GF 21.5sqm FF 21.1sqm	GF 3.4sqm** FF 5.1sqm

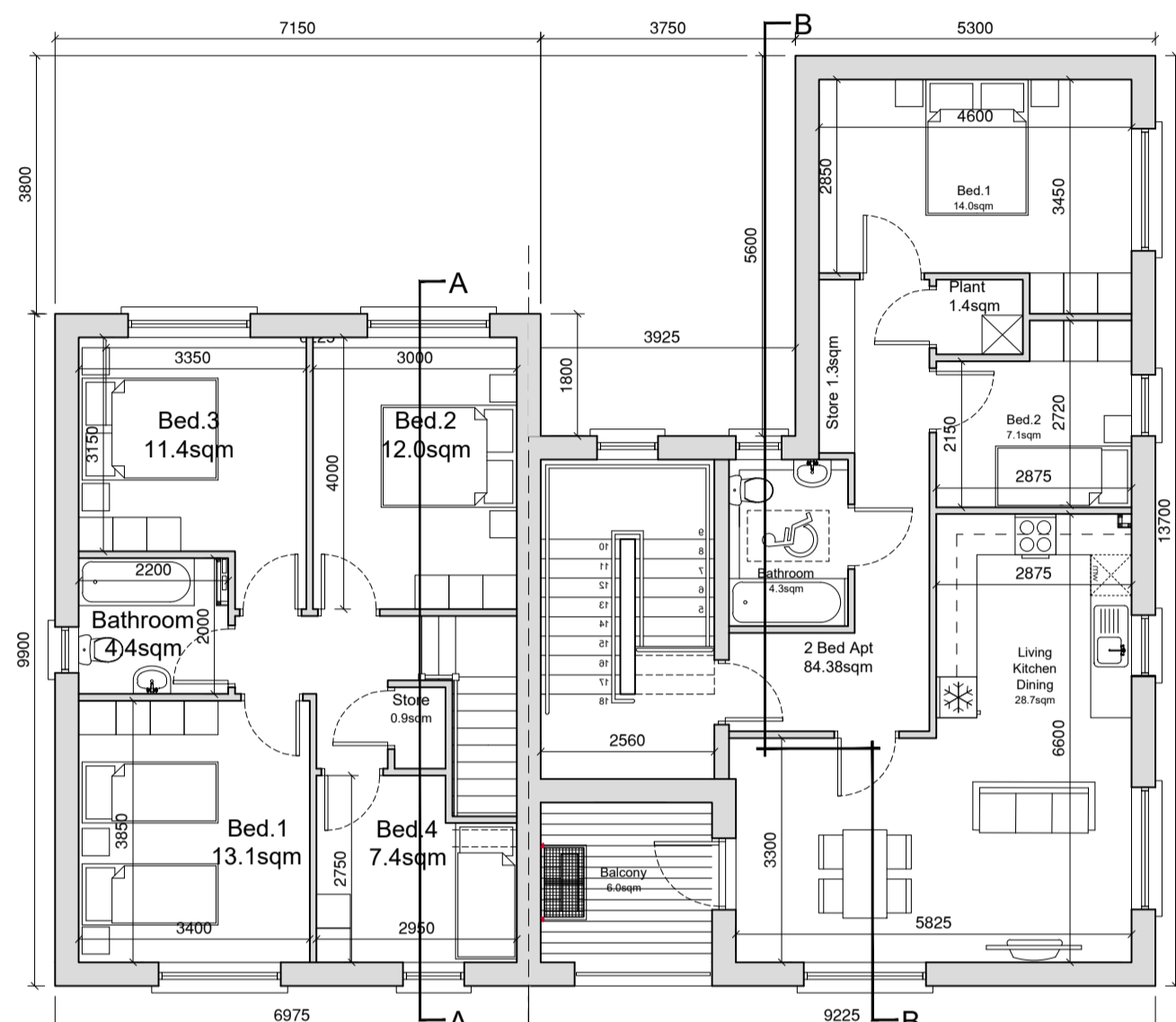
2 Bedroom / 3 Person (apt) Widths:

	Single Bedroom (m)	Double Bedroom (m)	Living Rm [1 Bed] (m)	Living Rm [2 Bed] (m)	Living Rm [3 Bed] (m)
Required	2.1m	2.8m	3.3m	3.6m	3.8m
Provided	GF 2.14m FF 2.2m	GF 3.36m FF 2.9m	-	GF 4.37sqm FF 3.3sqm	-

\*Excluding Stairs  
\*\*Additional Storage in External Shed

## External Finishes Schedule

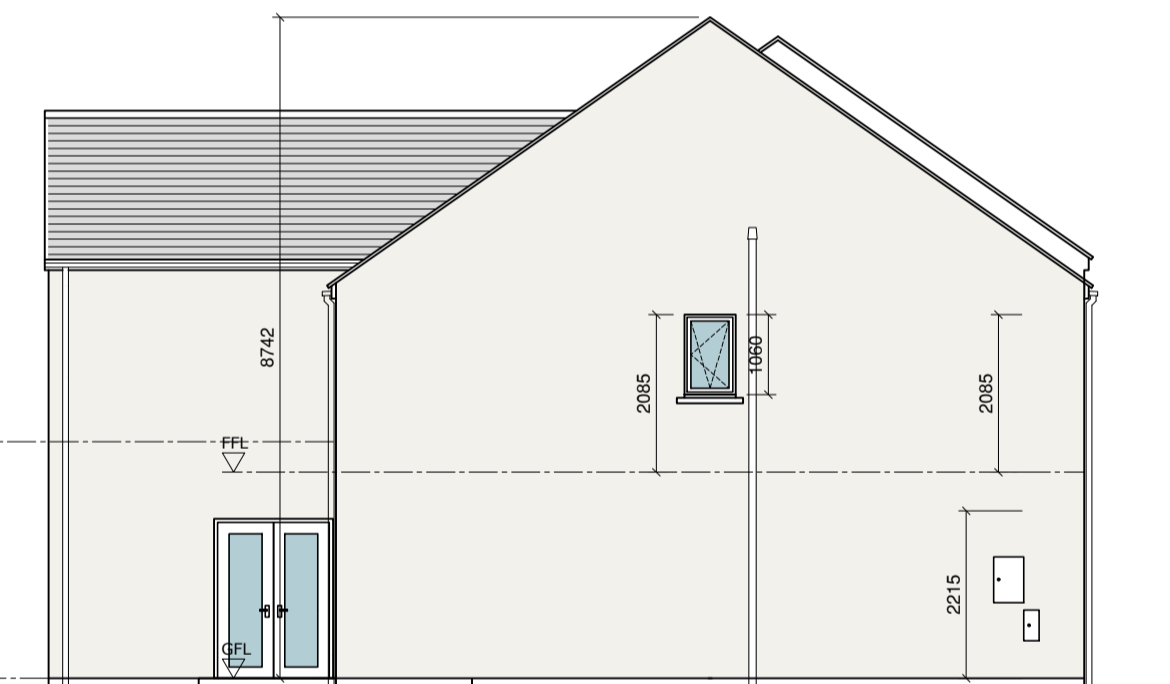
Roof:	Blue/Black Fibre cement Slate Dry Verge Finish.
Walls:	White External Render - Smooth/dashed Brick detail at Entrances
Windows & Doors:	Grey AluClad/uPVC
Rain Water Goods:	Black uPVC



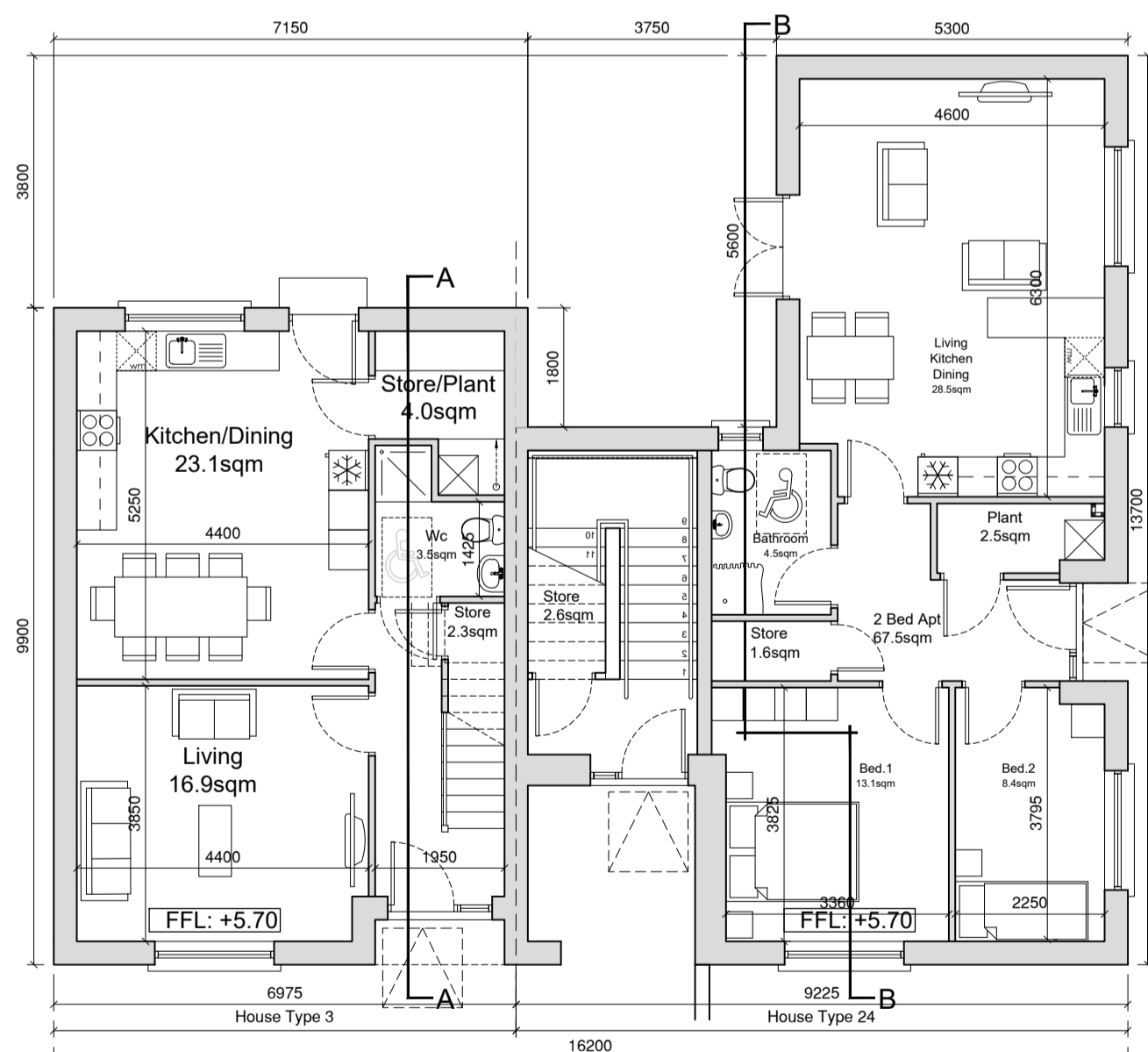
First Floor Plan



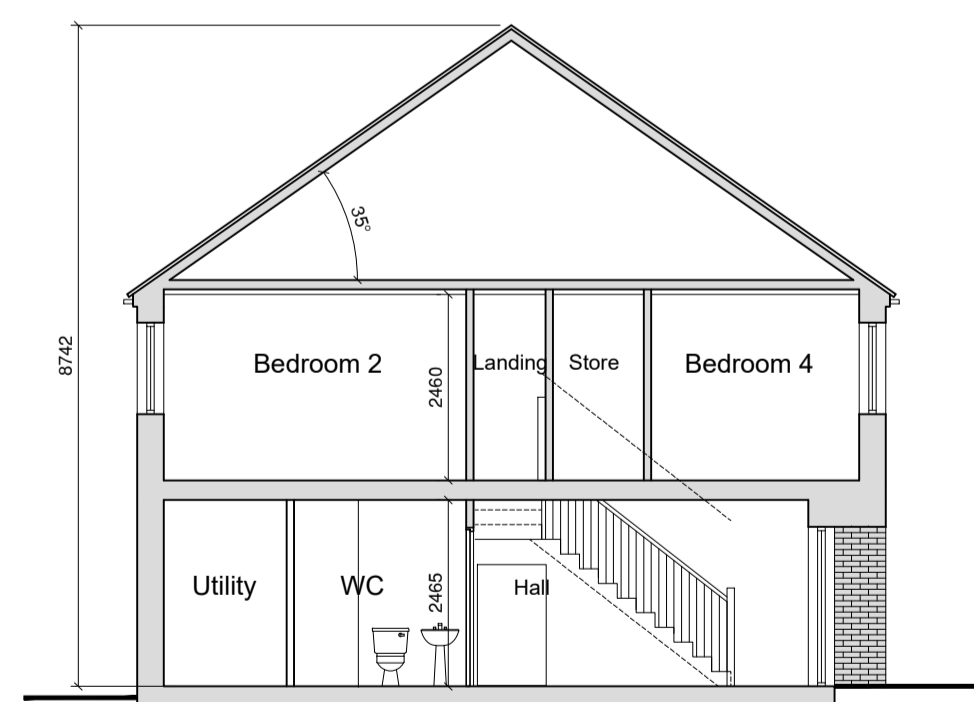
Rear Elevation



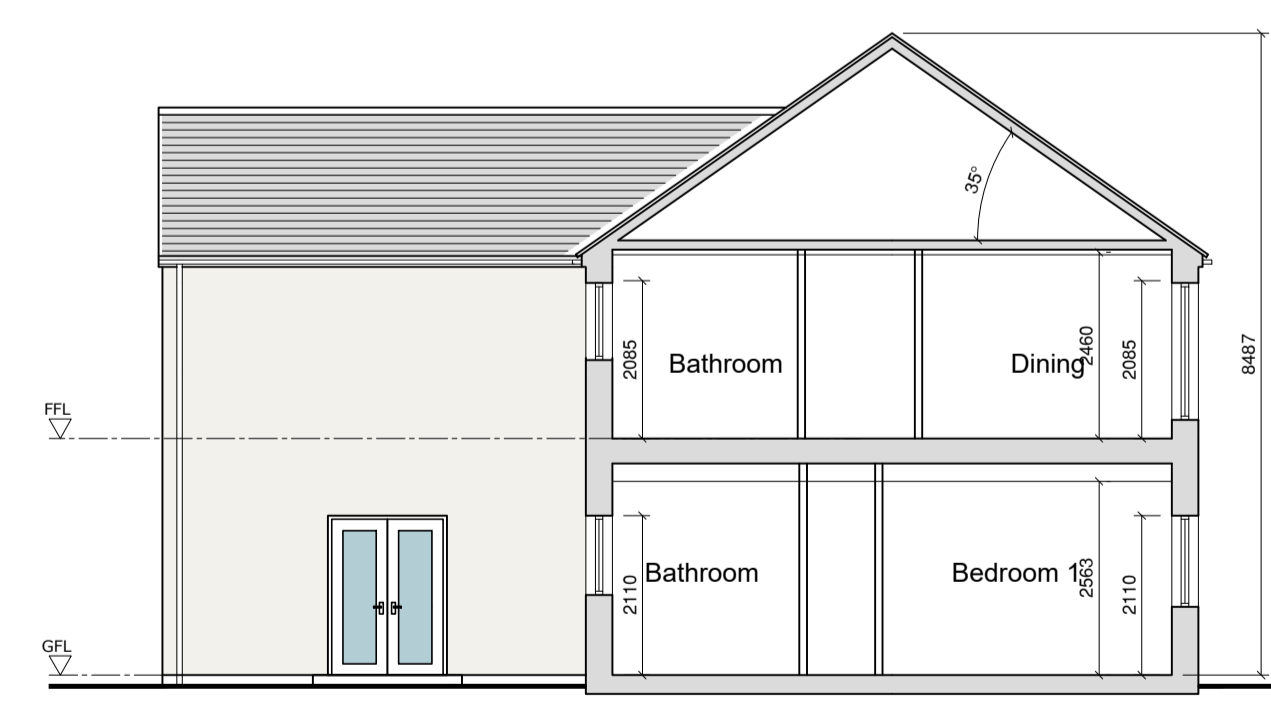
Side Elevation



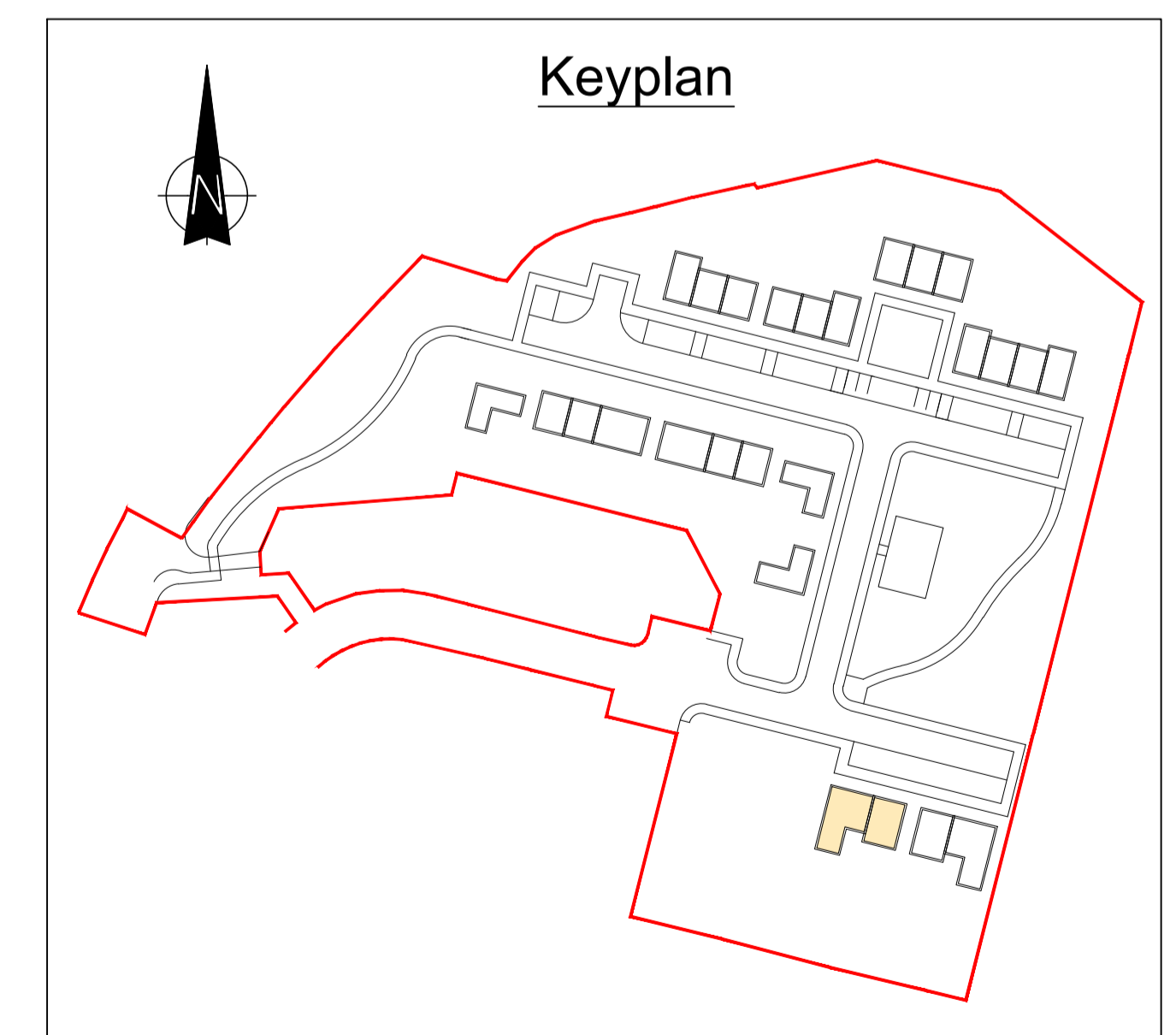
Ground Floor Plan



Section A-A



Section B-B



Keyplan